

Realising the Sustainable Development Goals through Responsible Management Education

Jonas Haertle, Head, PRME, UN Global Compact

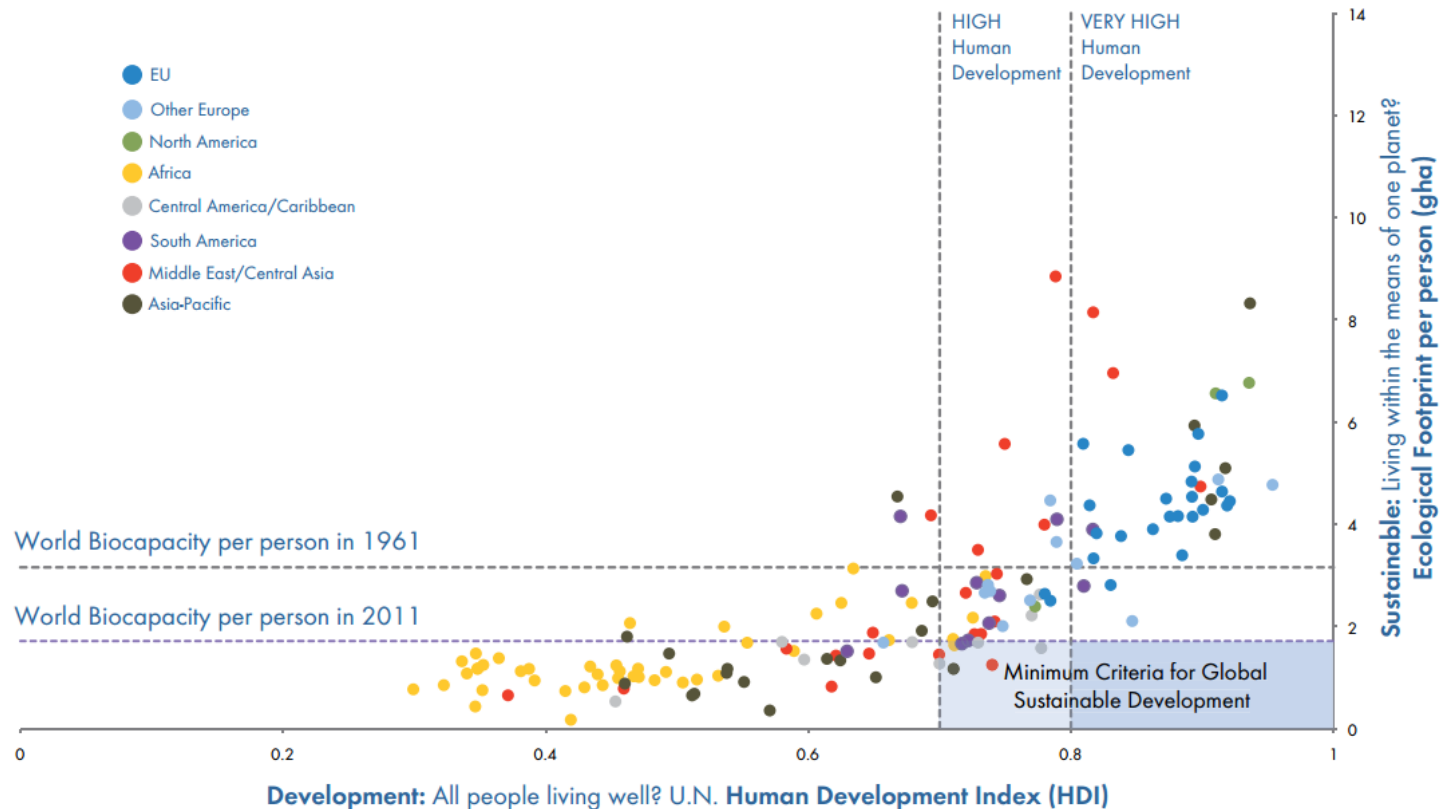


United Nations
Global Compact

PRME Principles for Responsible
Management Education



GOALS OF SUSTAINABLE DEVELOPMENT: HIGH HUMAN DEVELOPMENT AND LOW ECOLOGICAL IMPACT



AGENDA 2030



AACSB International's Collective Vision for Business Education



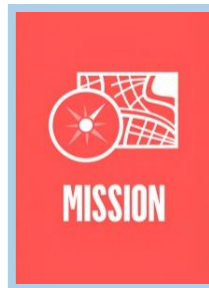
“The U.N.’s 17 Sustainable Development Goals (SDGs) address a wide range of global challenges, including poverty, hunger, health, climate, energy, and more. **Business sits alongside other disciplines** such as engineering, medicine, public administration, and social sciences **as a key enabler for each of the goals.**”

Source: <http://www.aacsb.edu/-/media/managementeducation/docs/collective-vision-for-business-education.ashx?la=en>

PRME's New Vision & Mission



The Sustainable Development Goals realised through responsible management education.



UN Global Compact's initiative to transform management education, research and thought leadership globally by **providing the Principles for Responsible Management Education** framework, developing **learning communities** and **promoting awareness** about the United Nations' Sustainable Development Goals.

THE SIX PRME PRINCIPLES



Principle 1 - Purpose: We will develop the capabilities of students to be future generators of sustainable value for business and society at large and to work for an inclusive and sustainable global economy.



Principle 2 - Values: We will incorporate into our academic activities and curricula the values of global social responsibility as portrayed in international initiatives such as the United Nations Global Compact.



Principle 3 - Method: We will create educational frameworks, materials, processes and environments that enable effective learning experiences for responsible leadership.



Principle 4 - Research: We will engage in conceptual and empirical research that advances our understanding about the role, dynamics, and impact of corporations in the creation of sustainable social, environmental and economic value.



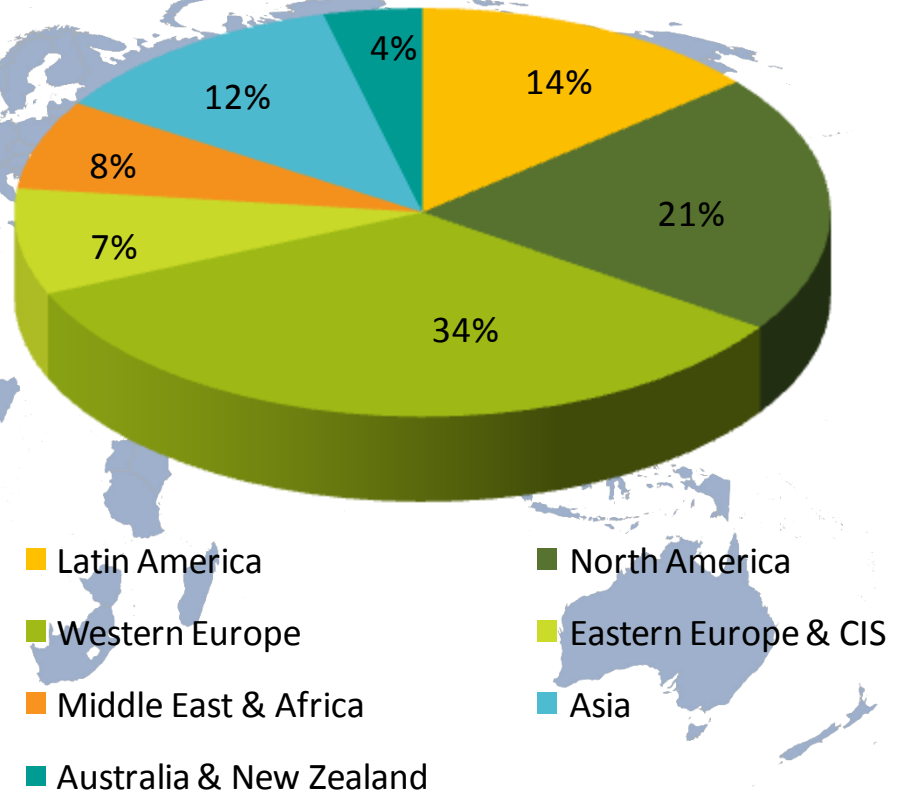
Principle 5 - Partnership: We will interact with managers of business corporations to extend our knowledge of their challenges in meeting social and environmental responsibilities and to explore jointly effective approaches to meeting these challenges.



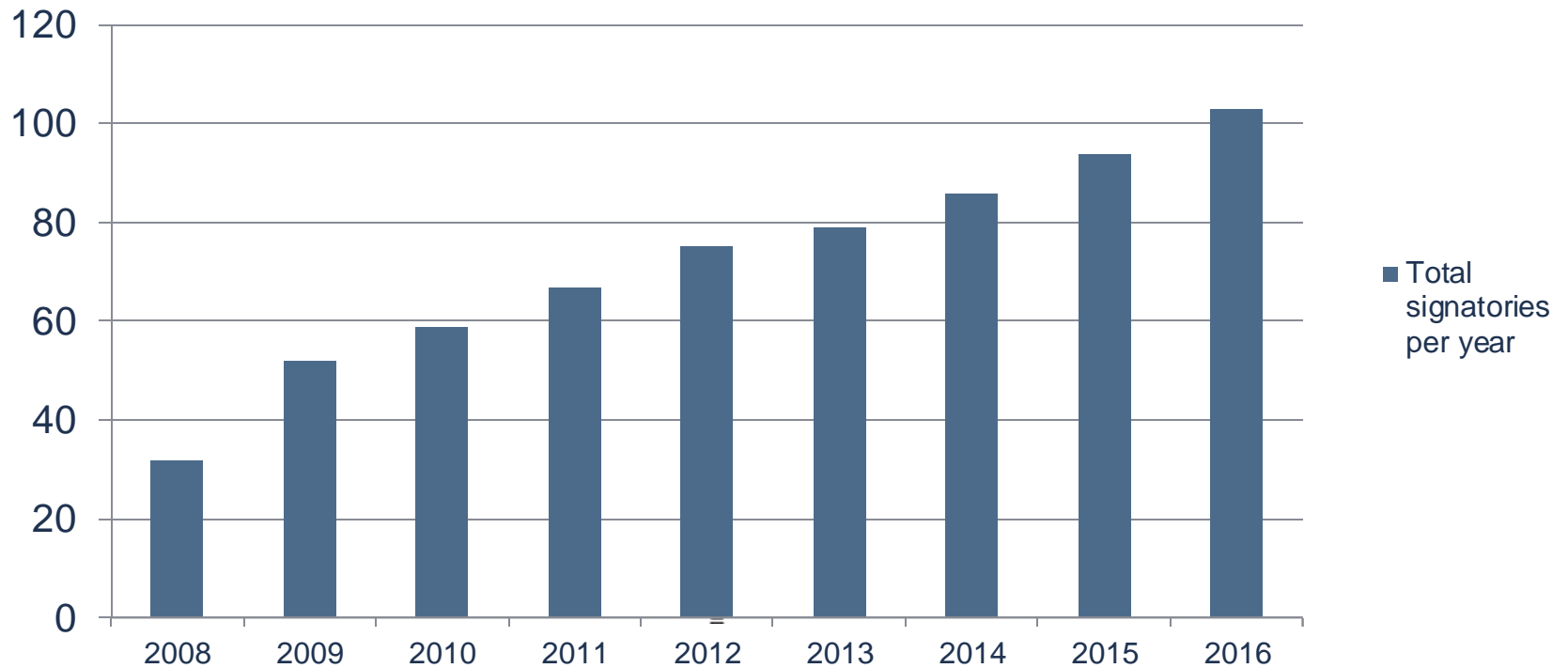
Principle 6 - Dialogue: We will facilitate and support dialog and debate among educators, students, business, government, consumers, media, civil society organizations and other interested groups and stakeholders on critical issues related to global social responsibility and sustainability.

WHO PARTICIPATES

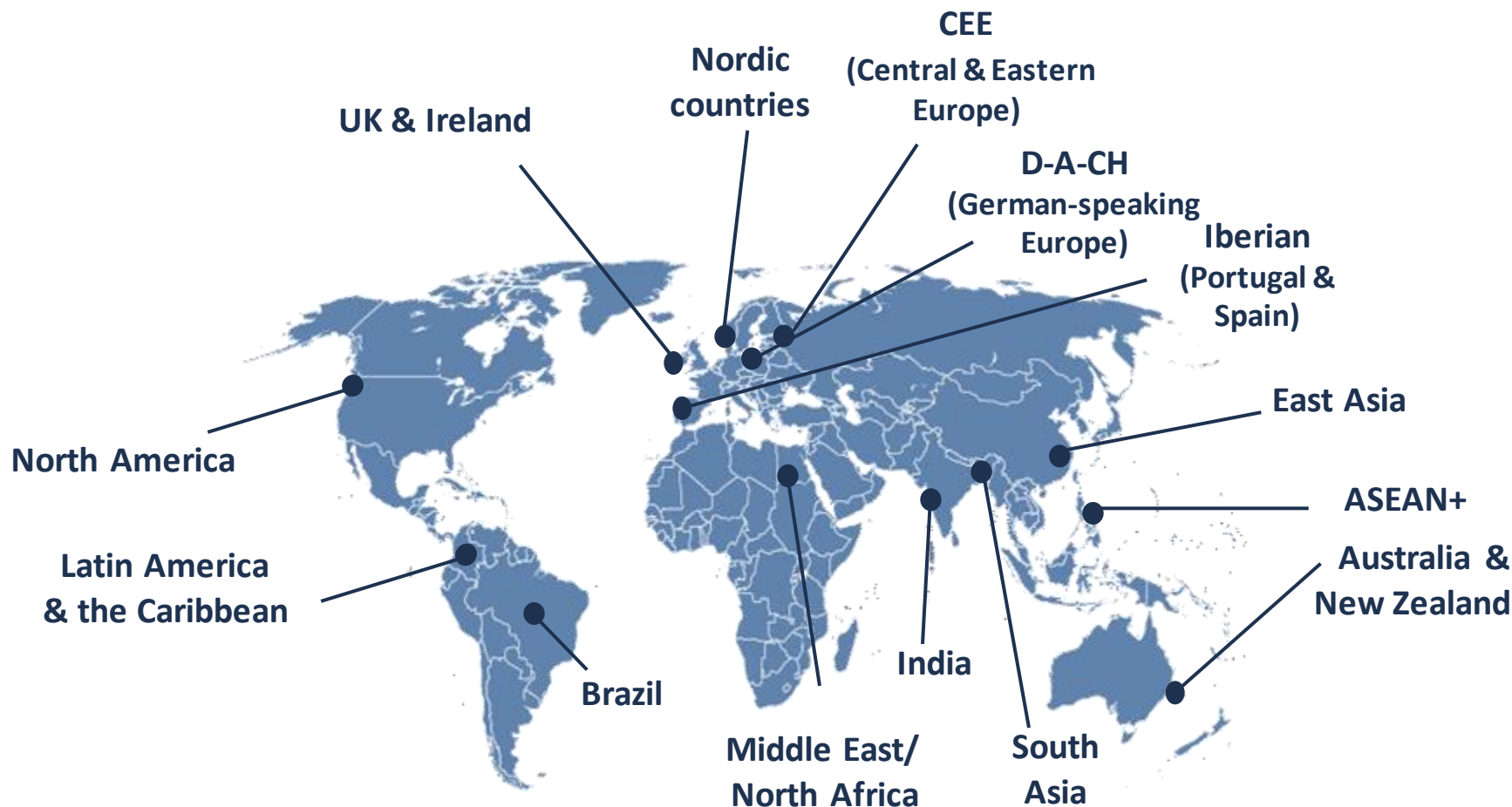
- Over 650 business schools/ management-related academic institutions and universities from 83 countries
- 42 of the *Financial Times*' top 100 Global MBA Ranking in 2016



PRME SIGNATORIES IN THE UNITED STATES



REGIONAL PRME CHAPTERS & REGIONAL MEETINGS



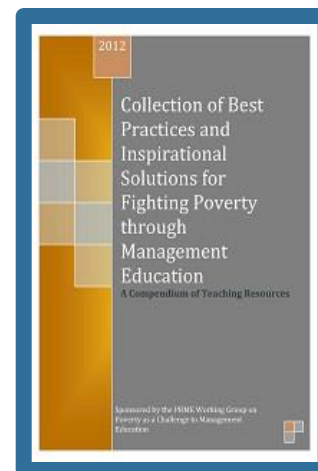
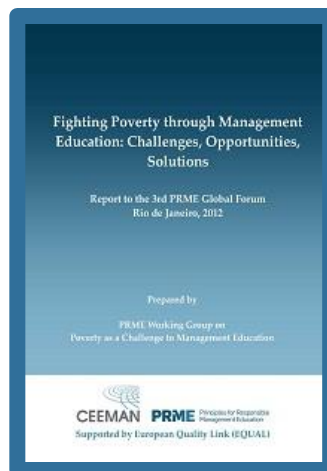
PRME WORKING GROUPS PROJECTS AND REPORTS



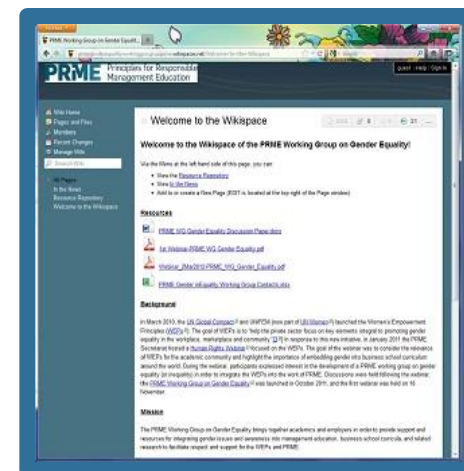
Anti-Corruption Toolkit



Poverty, a Challenge for Management Education



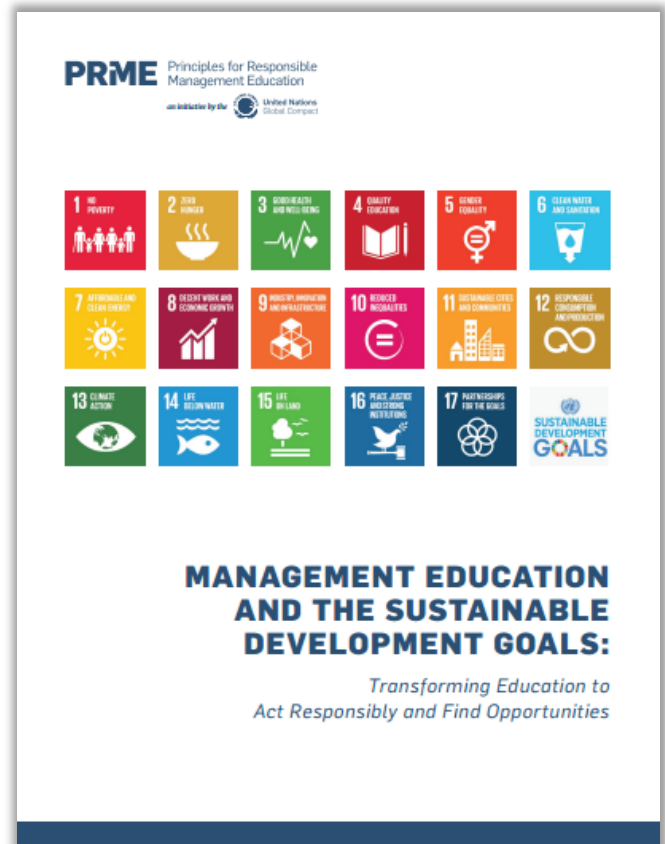
Gender Equality



MANAGEMENT EDUCATION AND THE SUSTAINABLE DEVELOPMENT GOALS

HOW CAN YOU GET ENGAGED?

- Align curricula and research
 - Insert new content, learning methods and transformative approaches
 - Applied research that can create solutions to help businesses be more effective and sustainable
- Act as public opinion leaders and advisers to businesses, government and civil society
- Engage through your PRME Chapter
- Engage students directly through Aim2Flourish



THANK YOU!



www.unprme.org

www.unglobalcompact.org

PRiME*time*

